

World Educational Robotics International Event

FOR PARTICIPANTS

Access to Centre Parcs Holiday Village (Sherwood Forest) from 8am to 11pm.
 Access to the Subtropical Swimming Paradise (indoor and outdoor heated pool).
 Registration (including vests, medals and certificates) for the Self Driving Car themed World Educational Robotics international event (10am - 4.30pm) at The Venue conference centre overlooking the lake.
 2 course buffet lunch.
 3 servings of water and biscuits.
 Paper and pencils.

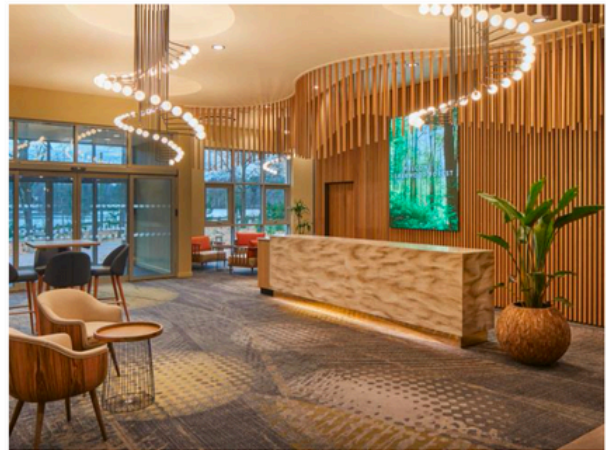


FOR GUARDIAN OBSERVERS

Access to Centre Parcs Holiday Village (Sherwood Forest) from 8am to 11pm.
 Access to the Subtropical Swimming Paradise (indoor and outdoor heated pool).
 Access to view the Self Driving Car themed World Educational Robotics international event (10am - 4.30pm) at The Venue conference centre overlooking the lake.
 2 course buffet lunch.
 3 servings of tea, coffee, water and biscuits.



Robotics Event - The Venue



Outdoor Space



Take a look at our 360 tour of the venue
[HERE](#)

Location



**Sherwood Forest, Rufford, Newark, Nottinghamshire,
NG22 9DN**

By road: Sherwood Forest is located north of Nottingham, about 25 minutes from both the A1 and M1 motorways.

By rail: The nearest station is Newark Northgate, 16 miles from Sherwood Forest, approx. 32 minutes. Travel time by train from London: 1 hour 13 minutes.

By air: The nearest airports are East Midlands and Robin Hood (Doncaster Sheffield).

For more detailed directions please visit [HERE](#)