

CHARLI CROCKER

National Coordinator Facilitator



At the core of Charli's work is a desire to educate others, enabling people to think for themselves and gain the skills, confidence (and courage) to manage any situation that arises.

Charli is passionate about delivering quality education. Sparked by a desire to create safer learning environments for children at the start of her career as an early childhood educator, Charli created paediatric first aid courses for other educators. From here Charli has held roles in Dive Instruction, Outreach Emergency Management and as an Outdoor Events Medic, providing general first aid through to complex emergency management and pre-hospital emergency care.

Working with high-risk industries such as mining, forestry, manufacturing and construction through to Early Childhood Centres, DHBs and Care Agencies, Charli has extensive experience allowing her to connect on a professional and personal level with people from all walks of life, focusing on what is important to the specific learners needs.

Charli's training style is unique, inclusive, and highly interactive making all learners comfortable and keen to learn.

We also offer some great Health and safety courses:

- > Workplace Health & Safety (L3)
- > Incident Investigation
- > Health and Safety Rep Training
- > Assessing & Analysing Risk
- > Fire Extinguisher
- > Fire Warden and Evacuation Training
- > Mental Well-Being Programme



BMINZ - BESPOKE FIRST AID COURSES

Our bespoke First Aid courses are a cost effective way of arranging your training and getting exactly what you want and need, at a time and location that suits.

One of our highly experienced and knowledgeable First Aid trainers will work with you to understand the topics that are really important for you and ensure that the content is entirely relevant.

We will cover any specific requirements, medical needs or particular First Aid issues, and can tailor the course to be specific to your industry or an activity that you are planning. You let us know what you would like and we will organise everything. We cover all ages and can also specialise in senior citizens, adults, baby or child First Aid

Please contact us and let us know exactly what you need:

www.bminz.co.nz | contactus@bminz.co.nz



HEALTH & SAFETY

WORKPLACE FIRST AID

COURSE DETAILS

- > Essential Workplace First Aid
- > Advanced Workplace First Aid
- > First Aid Refresher



ESSENTIAL WORKPLACE FIRST AID (DAY ONE)

Learn the latest first aid information and techniques


ADVANCED WORKPLACE FIRST AID (DAY TWO)

Learn to manage complex advanced first aid situations


REFRESHER FIRST AID TRAINING (1/2 DAY)


Update and revalidate your essential workplace first aid skills

AT A GLANCE

 NZQA unit standards **6402 - 6401**


 **8** hours

 **2&1** credits

 At your place or ours




AT A GLANCE

 NZQA unit standard **6400**

 **4** hours


 **2** credits


 At your place or ours


Prerequisite: 6401

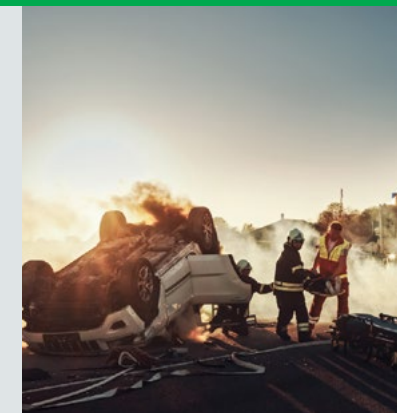


AT A GLANCE

 Renew your certificate

 **4-6** hours

 At your place or ours



Learn the basic skills required in an emergency First Aid situation. This course covers both NZQA unit standards 6402 and 6401 and the latest information and techniques needed to take care of yourself and others in the home or workplace.

6402: PROVIDE BASIC LIFE SUPPORT (RESUSCITATION)

- > The aim of first aid Primary Assessment
- > Scene Safety and Dangers
- > Levels of consciousness
- > CPR (adults, children, infants)
- > Defibrillator (AED) use
- > Chain of Survival
- > Choking (adults, children, infants)

6401: PROVIDE BASIC FIRST AID

- > Secondary assessment
- > Understanding medical history
- > Bleeding and shock
- > Burns
- > Fractures and dislocations
- > Soft tissue injuries
- > Poisoning
- > Allergic reactions (anaphylaxis)
- > Chest pains and heart attacks
- > Strokes (neurological conditions)
- > Seizures
- > Asthma
- > Diabetes

COURSE REQUIREMENTS

- > Over the age of 14
- > Be able to complete practical tasks (such as kneeling on floor)
- > We can cater to special requirements, just ask

Unit standard achievement remains valid for 2 years

Learn advanced skills required in an emergency situation. This course extends on the information from both NZQA unit standards 6402 and 6401. The theory and practical components cover aspects such as the environment, number of people injured or unwell, number and description of bystanders, treatment of advanced injuries and what the learner is expected to do in each situation.

6400: MANAGE FIRST AID IN EMERGENCY SITUATIONS

- > Manage scene safety and dangers
- > CPR, AED, chain of survival
- > Levels of consciousness
- > Fractures with complications
- > Head injuries
- > Suspected spinal injuries
- > Major wounds
- > Internal bleeding
- > Major burns (thermal, chemical, electrical)
- > Severe allergic reactions
- > Heat and cold emergencies
- > Multiple casualty management

COURSE REQUIREMENTS

- > Must hold a current 6401 certificate
- > Over the age of 14
- > Be able to complete practical tasks (such as kneeling on floor)
- > We can cater to special requirements, just ask

Unit standard achievement remains valid for 2 years

This course refreshes the knowledge of NZQA unit standards 6402, 6401 and 6400. Be updated with new and emerging first aid skills and techniques, and the latest information and techniques needed to upskill and take care of yourself and others in the home or workplace.

COURSE CONTENT

- > The aim of first aid Primary Assessment
- > Scene Safety and Dangers
- > Levels of consciousness
- > CPR (adults, children, infants)
- > Defibrillator (AED) use
- > Chain of Survival
- > Choking (adults, children, infants)
- > Secondary assessment
- > Understanding medical history
- > Bleeding and shock
- > Burns
- > Fractures and dislocations
- > Soft tissue injuries
- > Poisoning Allergic reactions (anaphylaxis)
- > Chest pains and heart attacks
- > Strokes (neurological conditions)
- > Seizures
- > Asthma
- > Diabetes

COURSE REQUIREMENTS

- > Must have been previously certified within the last 2 years
- > Be able to complete practical tasks (such as kneeling on floor)
- > We can cater to special requirements, just ask