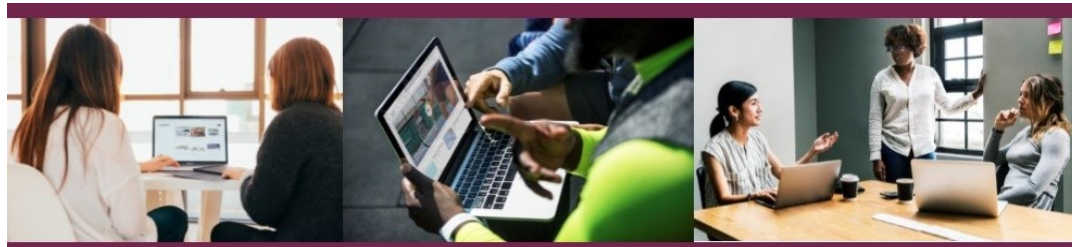


# Understanding Data as a Governor

LEAD | CHALLENGE | IMPROVE



The workshop is facilitated by Giles Osborne who is currently a Lead Academy Improvement Partner, Chair of Governors, and an ex Executive Headteacher of an all-through school. He has worked in a range of good and outstanding schools and was formerly an advisor to Kent LEA and a Senior University Lecturer at Brighton, Cambridge and Canterbury Christ Church. Giles is a national trainer for ASP and is currently supporting academy chains on leadership and management, as well as working with a range of alternative provisions. He is also the co-creator of 'TEAM', the National Database for SEMH schools and PRUs, and a national bench marking tool and progress model.

## This workshop aims to:

- show governors what they need to focus on and what they need to know in order to hold their school to account
- help governors to support and challenge the leadership team
- show how strengths and weaknesses are highlighted and provide guidance on to how to use the Inspection Dashboard effectively
- Use data from your own school in the previous academic year

Other online workshops, as well as the Professional Clerks Development Programme, are also available.

Please visit our website for further details.

## Closing the Gap

*Making the most of de-delegated funds for Leicester primary schools*

To book your place, please visit our online booking system  
or call 0116 2689727 for further information

email: [TSHub@LeLTSH-tmet.uk](mailto:TSHub@LeLTSH-tmet.uk)

<https://bookwhen.com/teachingschool>

[www.eltsh-tmet.uk](http://www.eltsh-tmet.uk)

## Online Workshop

Monday 13th  
February 2023

or

Tuesday 25th  
April 2023

Log in from  
5.35pm

Workshop

5.45pm to  
7.30pm

Optional Q&A  
Session  
7.30pm

## £30

per delegate

Fully funded  
places available  
for LPP schools,  
funded by  
Closing the Gap

